

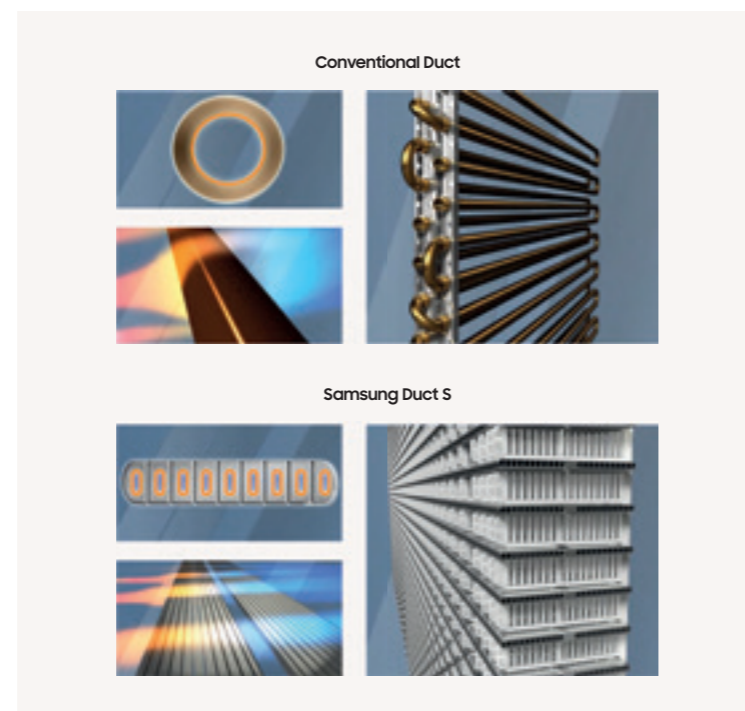
Innovations in detail



Duct S

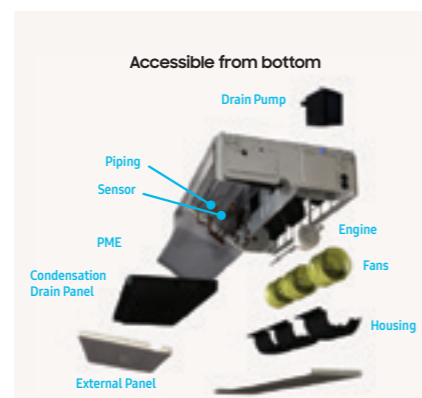
Flat microchannel heat evaporator/condenser

Samsung's innovative FME/FMC technology provides increased efficiency compared with the conventional fin and tube type. These modern innovations have also enabled a reduction in the size of the unit.



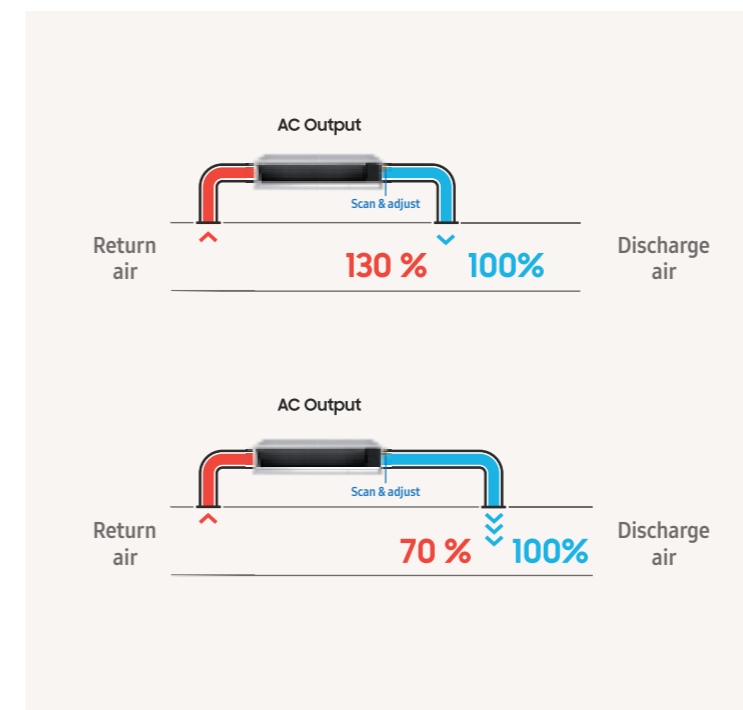
Indoor discharge temperature

Each ducted indoor unit, or AHU kit, boasts a discharge air temperature control function that offers greater comfort without the need to change the outdoor unit setting. Cooling and heating options can be selected using a remote control, and this applies to all ducted/AHU connected systems.



Easy installation and maintenance

Thanks to their ultra-compact design, Samsung duct units can be placed anywhere and can even be split into two parts (20/25 kW models). This makes for easy installation and maintenance. The indoor unit can be accessed from three directions: from the top, bottom and one side, making maintenance simpler than ever.



Automatic ESP setting

The automatic operation of the external static pressure feature is very simple to set up.

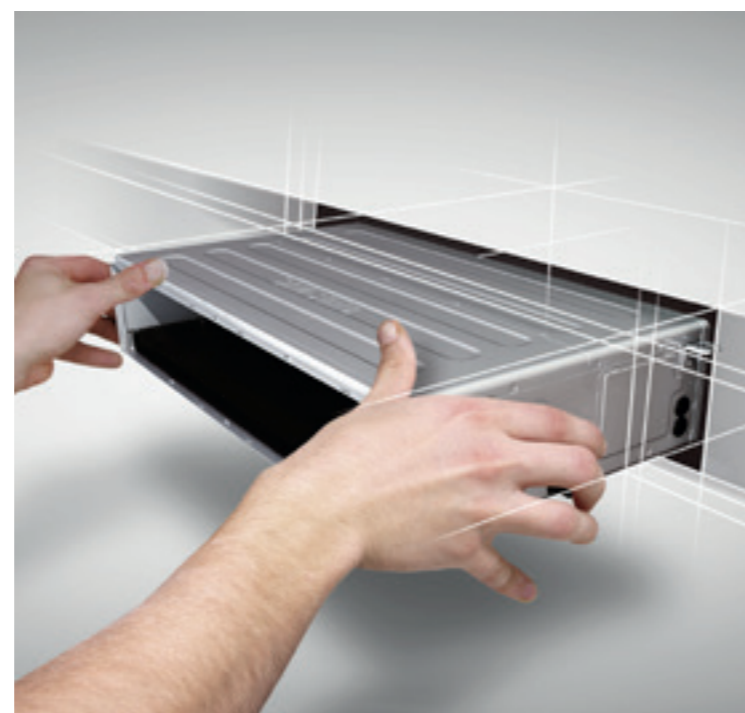
This auto setting enables you to choose the optimal operating range for the fan. The result is the greatest possible comfort with an optimal balance between sound level and capacity. Please contact your Samsung representative to find out which indoor units feature this function.

Innovations in detail

Slim Duct S

Slim design for small ceiling spaces

The Slim Duct S is a slim 200 mm in width, making it much narrower than conventional products. This allows for easy installation and maintenance in all kinds of spaces.



Built-in drain pump

A check valve on the drain pump prevents drained water from flowing back into the drain pan, minimising the water level in the drain pan. This modern design feature means no water stagnation, and prevents drain water overflowing into your interiors.



Specifications

LSP Duct R32

- Fan with inverter motor; prevalence adjustable up to 40 Pa; thickness of just 200.
- 750 mmH₂O condensation drain pump (optional); antibacterial filter included.



Indoor Unit		AC026RNLDKG/EU	AC035RNLDKG/EU	AC052RNLDKG/EU	AC071RNLDKG/EU	
Outdoor Unit - Mono-Phase		AC026RXADKG/EU	AC035RXADKG/EU	AC052RXADKG/EU	AC071RXADKG/EU	
Outdoor Unit - Tri-Phase						
Capacity						
Cooling (Min/Nominal/Max)	kW	0.80/2.60/3.80	0.85/3.50/4.30	1.20/5.00/6.50	1.50/7.10/8.70	
	Heating @ +7 °C (Min/Nominal/Max)	0.98/3.30/4.30	1.00/4.00/5.00	1.10/6.00/7.20	1.90/8.00/9.00	
	Heating @ -5 °C	3.2	3.9	5.9	7.8	
	Heating @ -15 °C	2.9	3.5	5.2	7.0	
Performance						
Energy Efficiency Cooling	SEER ¹	6.2/ A++	6.1/ A++	6.1/ A++	6.0/ A+	
	Power Consumption	147	201	287	414	
	Pdesignc	2.60	3.50	5.00	7.10	
	EER	3.82	3.12	2.96	2.98	
Energy Efficiency Heating	SCOP ¹	4.0/ A+	4.0/ A+	3.9/ A	3.9/ A	
	Power Consumption	700	700	862	1,328	
	Pdesignh (average)	2.0	2.0	2.4	3.7	
	COP ¹	3.79	3.31	3.45	3.36	
Airflow Rate	Indoor Unit (H/M/L)	m ³ /min	9.0/8.2/7.4	9.5/8.5/7.5	13.5/11.5/9.5	19.0/14.5/10.0
Sound Power	Indoor Unit	dB(A)	53	53	55	59
	Outdoor Unit	dB(A)	59	61	62	65
Sound Pressure	Indoor Unit (H/M/L)	dB(A)	32/29/26	33/30/27	33/30/27	37/32/27
	Outdoor Unit (H/L)	dB(A)	47/46	48/48	48/48	51/49
Fan/Outdoor Unit	Type		Sirocco	Sirocco	Sirocco	Sirocco
	Power	W	153	153	153	153
	Number of Fans	-	2	2	3	3
External Static Pressure	Min/Std/Max	Pa	0.00/25.00/39.00	0.00/25.00/39.00	0.00/25.00/39.00	0.00/25.00/39.00
Operating Temperature Range	Cooling	°C	-15-46	-15-46	-15-50	-15-50
	Heating	°C	-20.0-24.0	-20.0-24.0	-20.0-24.0	-20.0-24.0
Electrical Data						
Power Source	Indoor Unit	Φ, #, V, Hz	1Φ, 2, 220-240 V, 50 Hz	1Φ, 2, 220-240 V, 50 Hz	1Φ, 2, 220-240 V, 50 Hz	1Φ, 2, 220-240 V, 50 Hz
	Outdoor Unit Mono-Phase	Φ, #, V, Hz	1Φ, 2, 220-240 V, 50 Hz	1Φ, 2, 220-240 V, 50 Hz	1Φ, 2, 220-240 V, 50 Hz	1Φ, 2, 220-240 V, 50 Hz
	Outdoor Unit Tri-Phase	Φ, #, V, Hz				
Compressor Type	Outdoor Unit	Type	Single BLDC	Single BLDC	Twin BLDC	Twin BLDC
	Power (Min/Nominal/Max)	kW	0.19/0.68/1.20	0.20/1.12/1.40	0.35/1.69/2.20	0.35/2.38/3.60
Current Input	Heating	kW	0.20/0.87/1.45	0.19/1.21/1.80	0.26/1.74/2.70	0.35/2.38/3.95
	Cooling (Min/Std/Max)	A	1.5/3.6/5.5	1.6/5.4/6.5	2.1/7.7/10.0	2.0/10.5/16.0
	Heating (Min/Std/Max)	A	1.3/4.5/7.0	1.3/5.8/10.5	1.7/7.8/12.0	2.0/10.4/17.0
	Cooling - Tri-Phase (Min/Std/Max)	A				
Dimensions	Indoor Unit	mm	700 x 199 x 600	700 x 199 x 600	1,100 x 200 x 450	1,100 x 200 x 450
	Outdoor Unit	mm	790 x 548 x 285	790 x 548 x 285	880 x 638 x 310	880 x 798 x 310



Indoor Unit		AC026RNLDKG/EU	AC035RNLDKG/EU	AC052RNLDKG/EU	AC071RNLDKG/EU	
Outdoor Unit - Mono-Phase		AC026RXADKG/EU	AC035RXADKG/EU	AC052RXADKG/EU	AC071RXADKG/EU	
Outdoor Unit - Tri-Phase						
Net Weight	Indoor Unit	kg	19.0	19.0	23.5	23.5
	Outdoor Unit	kg	32.5	32.5	43.0	51.0
Refrigerant						
Refrigerant	Type	R32 (contains fluorinated greenhouse gases. GWP = 675)				
	Factory Charging	kg	0.9/20 m	0.9/20 m	1.2/10 m	1.7/15 m
	Charging Ton equivalent CO ₂	tCO ₂ e	0.61	0.61	0.81	1.15
	Additional Refrigerant Charging	g/m	-	-	15	25
Piping Connections	Liquid Pipe	ø, inch	1/4	1/4	1/4	1/4
	Gas Pipe	ø, inch	3/8	3/8	1/2	5/8
Piping Length	Min/Max	m	3/20	3/20	3/30	3/50
Piping Height	Max	m	15	15	20	30
Piping Connections	Drain Pipe	ø, mm	VP25 (OD 32, ID 25)	VP25 (OD 32, ID 25)	VP25 (OD 32, ID 25)	VP25 (OD 32, ID 25)
Others						
Panel	Model Code					
	Net Dimensions (W x H x D)	mm				
Accessories	Net Weight	kg				
	Drain Pump		MDP-E075SEE3D	MDP-E075SEE3D	MDP-G075SP	MDP-G075SP
	Max. Lifting Height/Displacement	mm / litres/h	750/24	750/24	750/24	750/24

Accessories

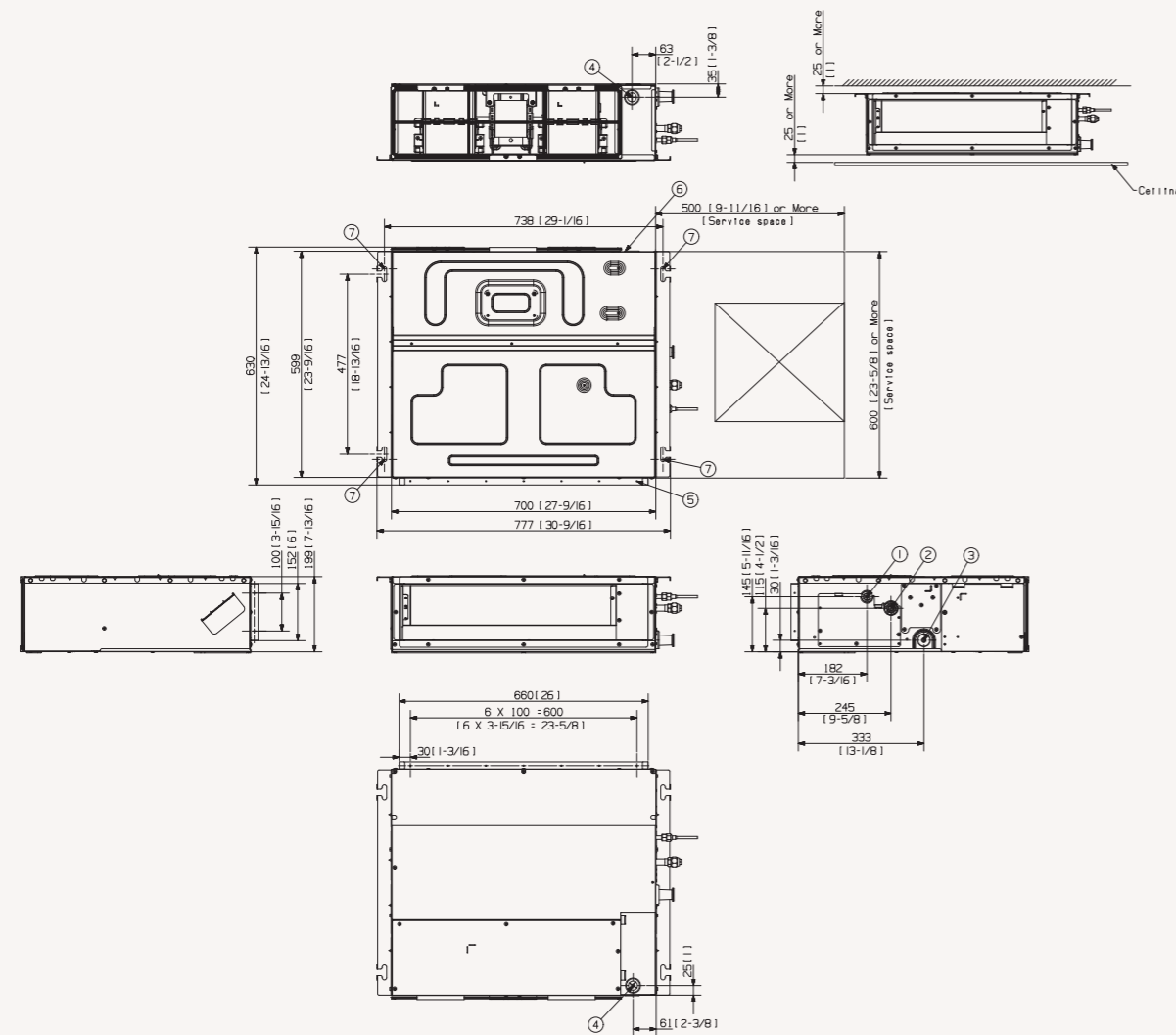
MDP-E075SEE3D	AR-EH03E (to be matched with MRK-A10N)	MWR-SH11N	MWR-WG00JN/ MWR-WG00KN	MIM-H04N	MRK-A10N (to be matched with AR-EH03E)	MRW-TA	MSD-EAN1

¹Energy labels as shown are according to EU No 626/2011 (LOT 10) label classification 2019, on a scale from D to A+++.

Dimensional drawings

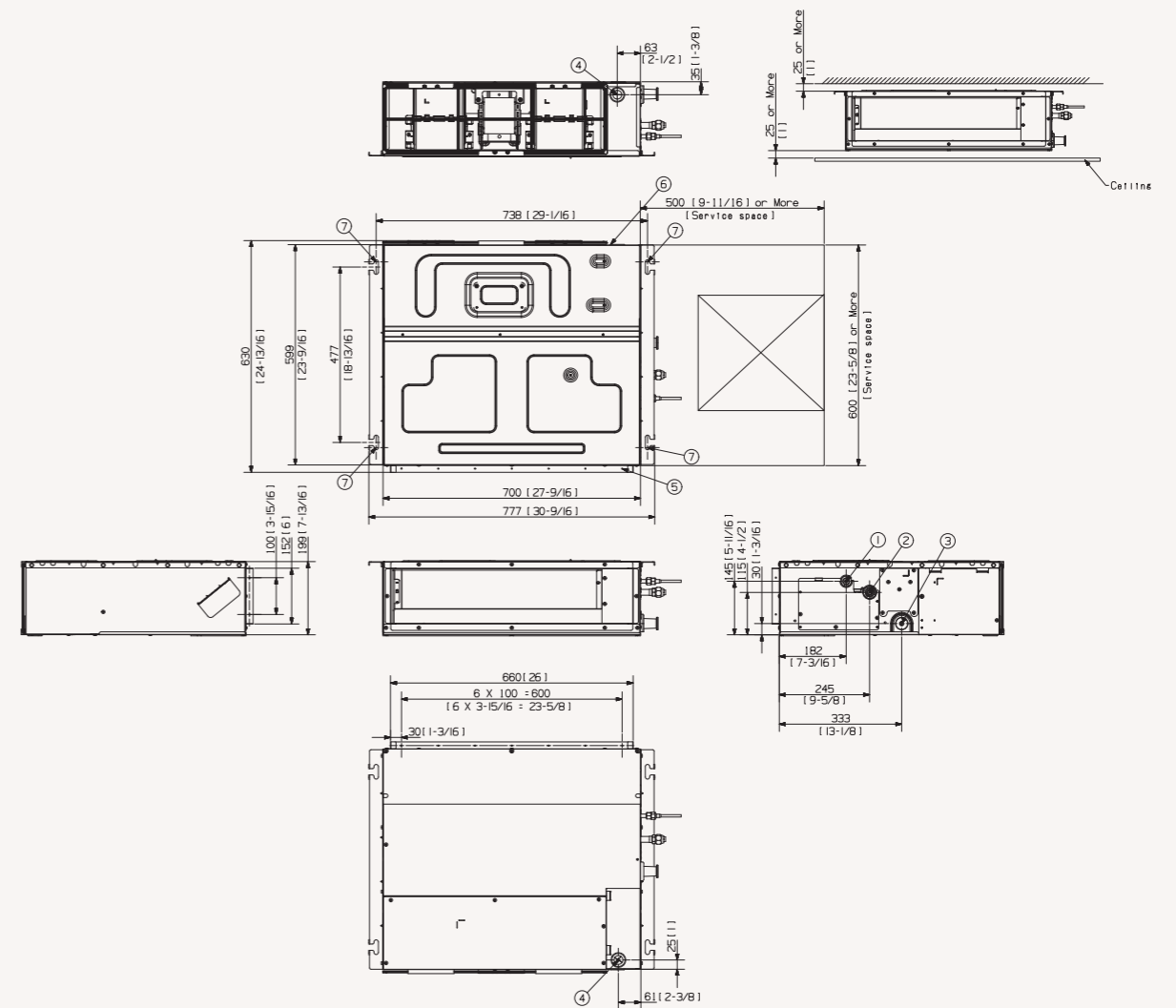
LSP Duct

AC026/035*NLDK*/EU



NO	Name	Description
1	Liquid piping	ø6.35 (1/4)
2	Gas piping	ø9.52 (3/8)
3	Condensation drain piping	VP25 (OD 32, ID 25)
4	Power supply/communication wiring conduits	
5	Air intake	
6	Air supply	
7	Air tie rods	Use M8-M10 bolt (4x)

AC052/071*NLDK*/EU



NO	Name	Description
1	Liquid piping	ø6.35 (1/4)
2	Gas piping	ø9.52 (3/8)
3	Condensation drain piping	VP25 (OD 32, ID 25)
4	Power supply/communication wiring conduits	
5	Air intake	
6	Air supply	
7	Air tie rods	Use M8-M10 bolt (4x)

Specifications

MSP Duct R32

- External static pressure range from 0 to 14 mmAq.
- Built-in electronic expansion valve (EEV) for refrigerant flow control (2000-step).
- Long-life washable permanent filter is included.
- Auto Restart function.
- Built-in condensation drain pump (750 mmH2O).
- SPI Ioniser (optional).



Indoor Unit		AC035RNMDKG/EU	AC052RNMDKG/EU	AC071RNMDKG/EU	AC100RNMDKG/EU	AC120RNMDKG/EU	AC140RNMDKG/EU
Outdoor Unit - Mono-Phase		AC035RXADKG/EU	AC052RXADKG/EU	AC071RXADKG/EU	AC100RXADKG/EU	AC120RXADKG/EU	AC140RXADKG/EU
Outdoor Unit - Tri-Phase		AC100RXADNG/EU	AC120RXADNG/EU	AC140RXADNG/EU			
Capacity							
Cooling (Min/Nominal/Max)	kW	0.80/3.50/4.40	1.20/5.00/6.50	1.50/6.80/8.70	3.00/10.00/12.00	3.00/12.00/13.50	3.50/13.40/15.50
	Heating @ +7 °C (Min/Nominal/Max)	1.10/4.00/4.70	1.10/6.00/7.20	1.90/8.00/9.00	2.20/11.20/15.50	2.50/13.20/17.00	3.50/15.50/18.00
	Heating @ -5 °C	3.90	5.90	7.80	11.00	12.90	15.20
	Heating @ -15 °C	3.50	5.20	7.00	9.70	11.50	13.50
Performance							
Energy Efficiency Cooling	SEER ¹	6.2/ A++	6.3/ A++	6.1/ A++	5.9/ A+	5.8/ A+	6.0/ A+
	Power Consumption	198	278	390	593	TBA	-
	Pdesignc	3.5	5.0	6.8	10.0	TBA	-
	EER	TBA	TBA	2.93	2.90	2.66	2.90
Energy Efficiency Heating	SCOP ¹	4.0/ A+	4.1/ A+	4.0/ A+	4.0/ A+	4.0/ A+	4.0/ A+
	Power Consumption	700	820	1,295	1,820	TBA	-
	Pdesignh (average)	2.0	2.4	3.7	5.2	6.5	-
	COP ¹	TBC	TBC	3.20	3.20	3.42	3.34
Airflow Rate	Indoor Unit (H/M/L)	m ³ /min	10.4/9.2/8.0	14.5/12.0/9.5	17.0/14.0/11.0	28.0/25.0/22.0	33.0/28.0/23.0
Sound Power	Indoor Unit	dB(A)	52	55	56	58	62
	Outdoor Unit	dB(A)	61	62	65	69	70
Sound Pressure	Indoor Unit (H/M/L)	dB(A)	28/25/22	29/26/23	30/27/24	34/32/30	37/34/30
	Outdoor Unit (H/L)	dB(A)	48/48	48/48	51/49	54/52	54/53
Fan/Outdoor Unit	Type		Sirocco	Sirocco	Sirocco	Sirocco	Sirocco
	Power	W	153	153	153	153	153
	Number of Fans	-	2	2	2	3	3
External Static Pressure	Min/Std/Max	Pa	TBA	TBA	0.00/29.00/147.00	0.00/39.20/147.00	0.00/51.00/147.00
Operating Temperature Range	Cooling	°C	-15-46	-15-50	-15-50	-15-50	-15-50
	Heating	°C	-20.0-24.0	-20.0-24.0	-20.0-24.0	-20.0-24.0	-20.0-24.0
Electrical Data							
Power Source	Indoor Unit	Φ, #, V, Hz	1Φ, 2, 220-240 V, 50 Hz	1Φ, 2, 220-240 V, 50 Hz	1Φ, 2, 220-240 V, 50 Hz	1Φ, 2, 220-240 V, 50 Hz	1Φ, 2, 220-240 V, 50 Hz
	Outdoor Unit Mono-Phase	Φ, #, V, Hz	1Φ, 2, 220-240 V, 50 Hz	1Φ, 2, 220-240 V, 50 Hz	1Φ, 2, 220-240 V, 50 Hz	1Φ, 2, 220-240 V, 50 Hz	1Φ, 2, 220-240 V, 50 Hz
	Outdoor Unit Tri-Phase	Φ, #, V, Hz	-	-	3Φ, 4, 380-415 V, 50 Hz	3Φ, 4, 380-415 V, 50 Hz	3Φ, 4, 380-415 V, 50 Hz
Compressor Type	Outdoor Unit	Type	Single BLDC	Twin BLDC	Twin BLDC	Twin BLDC	Twin BLDC
Power (Min/Nominal/Max)	Cooling	kW	0.20/1.02/1.36	0.35/1.60/2.20	0.35/2.32/3.60	0.60/3.44/4.70	0.90/4.50/5.30
	Heating	kW	0.24/1.15/1.80	0.26/1.64/2.70	0.35/2.50/3.95	0.46/3.50/5.40	0.90/4.50/5.30
Current Input	Cooling (Min/Std/Max)	A	1.40/5.00/6.20	2.10/7.20/10.00	2.00/10.40/16.00	3.00/15.20/20.40	5.00/19.70/24.00
	Heating (Min/Std/Max)	A	1.3/5.4/10.5	1.7/7.4/12.0	2.0/10.8/17.0	2.5/15.4/23.0	5.0/19.7/24.0
	Cooling - Tri-Phase (Min/Std/Max)	A	-	-	-	1.5/5.3/7.1	1.9/6.9/10.0
	Heating - Tri-Phase (Min/Std/Max)	A	-	-	-	1.5/5.3/7.1	1.9/7.0/12.0
Dimensions							
Net Dimensions (W x H x D)	Indoor Unit	mm	850 x 250 x 700	850 x 250 x 700	850 x 250 x 700	1,200 x 250 x 700	1,300 x 300 x 700
	Outdoor Unit	mm	790 x 548 x 285	880 x 638 x 310	880 x 798 x 310	940 x 998 x 330	940 x 998 x 330



Indoor Unit		AC035RNMDKG/EU	AC052RNMDKG/EU	AC071RNMDKG/EU	AC100RNMDKG/EU	AC120RNMDKG/EU	AC140RNMDKG/EU
Outdoor Unit - Mono-Phase		AC035RXADKG/EU	AC052RXADKG/EU	AC071RXADKG/EU	AC100RXADKG/EU	AC120RXADKG/EU	AC140RXADKG/EU
Outdoor Unit - Tri-Phase		AC100RXADNG/EU	AC120RXADNG/EU	AC140RXADNG/EU			
Net Weight	Indoor Unit	kg	26.5	26.5	26.5	34.0	38.5
	Outdoor Unit	kg	32.5	43.0	51.0	75.0	81.0
Refrigerant							
Refrigerant	Type		R32 (contains fluorinated greenhouse gases, GWP = 675)				
	Factory Charging	kg	0.9/20 m	1.2/10 m	1.7/15 m	2.7/30 m	2.7/30 m
	Charging Ton equivalent CO ₂	tCO ₂ e	0.61	0.81	1.15	1.82	1.82
	Additional Refrigerant Charging	g/m			25	50	50
Piping Connections	Liquid Pipe	ø, inch	1/4	1/4	1/4	3/8	3/8
	Gas Pipe	ø, inch	3/8	1/2	5/8	5/8	5/8
Piping Length	Min/Max	m	3/20	3/30	3/50	50	75
Piping Height	Max	m	15	20	30	30	30
Piping Connections	Drain Pipe	ø, mm	VP25 (OD 32, ID 25)	VP25 (OD 32, ID 25)	VP25 (OD 32, ID 25)	VP25 (OD 32, ID 25)	VP25 (OD 32, ID 25)
Others							
Panel	Model Code						
	Net Dimensions (W x H x D)	mm					
Accessories	Drain Pump		MDP-G075SP MDP-G075SQ	MDP-G075SP MDP-G075SQ	MDP-G075SP MDP-G075SQ	MDP-G075SP MDP-G075SQ	MDP-G075SP MDP-G075SQ
	Max. Lifting Height/Displacement	mm / litres/h	750/24	750/24	750/24	750/24	750/24

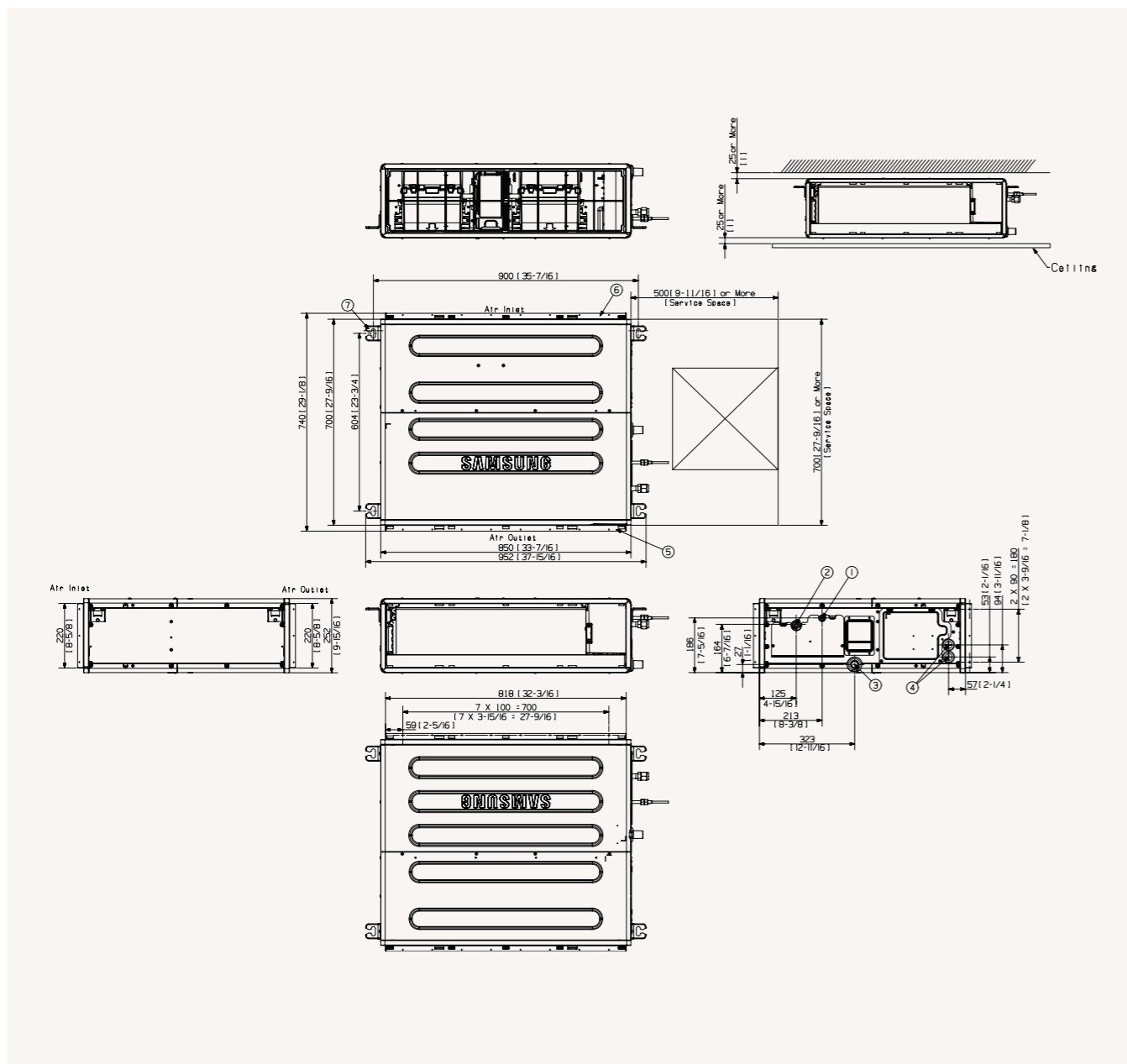
Accessories							
MDP-G075SP	MDP-G075SQ	AR-EH03E (to be matched with MRK-A10N)	MWR-SH11N	MWR-WG00JN/MWR-WG00KN	MIM-H04EN	MRK-A10N (to be matched with AR-EH03E)	MRW-TA
							MSD-EAN1

¹Energy labels as shown are according to EU No 626/2011 (LOT 10) label classification 2019, on a scale from D to A+++.

Dimensional drawings

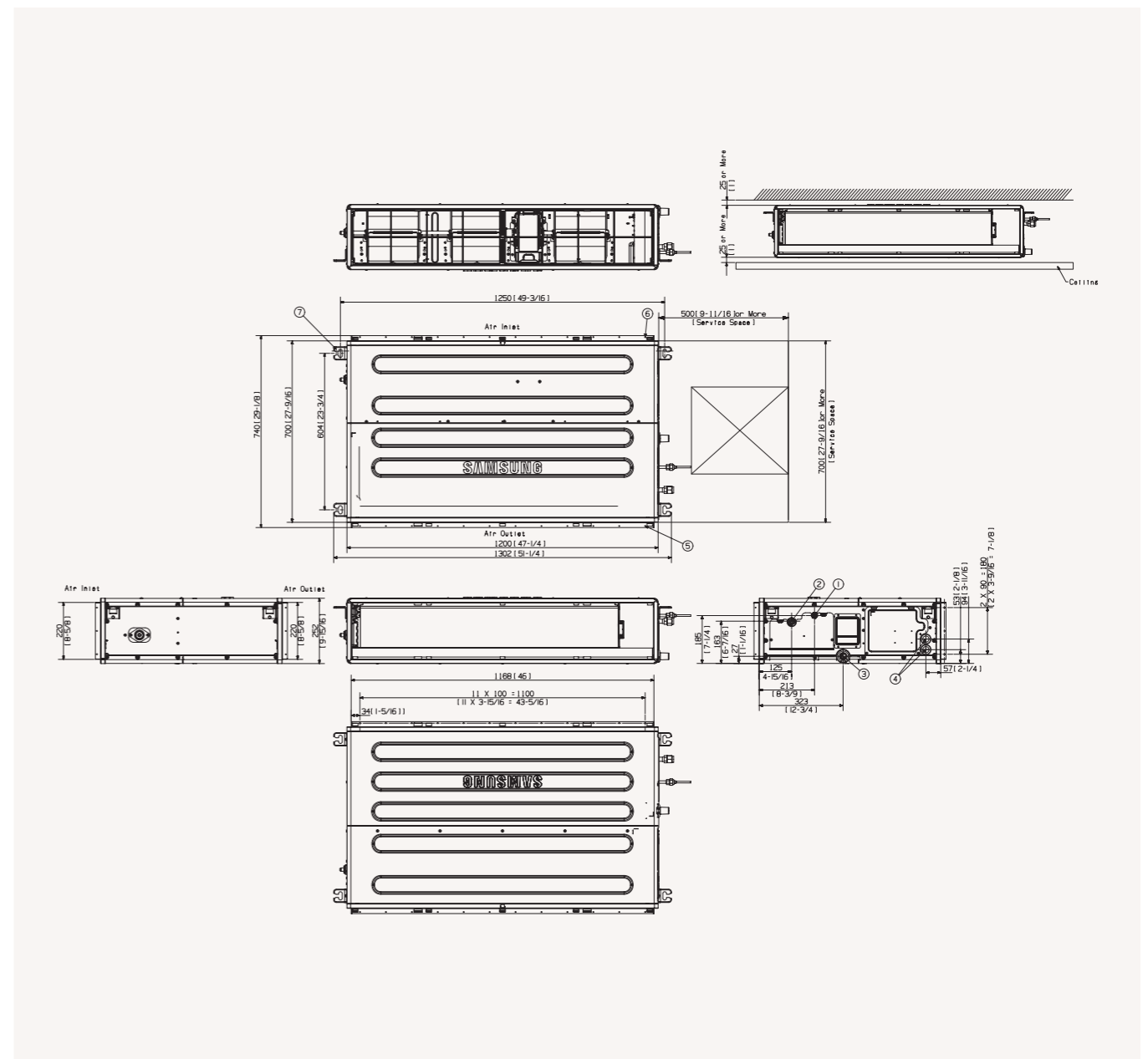
MSP Duct

AC035/052/060/071*NMDK*/EU



NO	Name	Description		
		AC035*NMDK*/EU	AC052*NMDK*/EU	AC060*NMDK*/EU AC071*NMDK*/EU
1	Liquid piping		ø6.35 (1/4)	
2	Gas piping	ø9.52 (3/8)	ø12.70 (1/2)	ø15.88 (5/8)
3	Condensation drain piping		VP25 (OD 32, ID 25)	
4	Power supply/communication wiring conduits		-	
5	Air intake		-	
6	Air supply		-	
7	Air tie rods		Use M8-M10 bolt (4x)	

AC090/100*NMDK*/EU

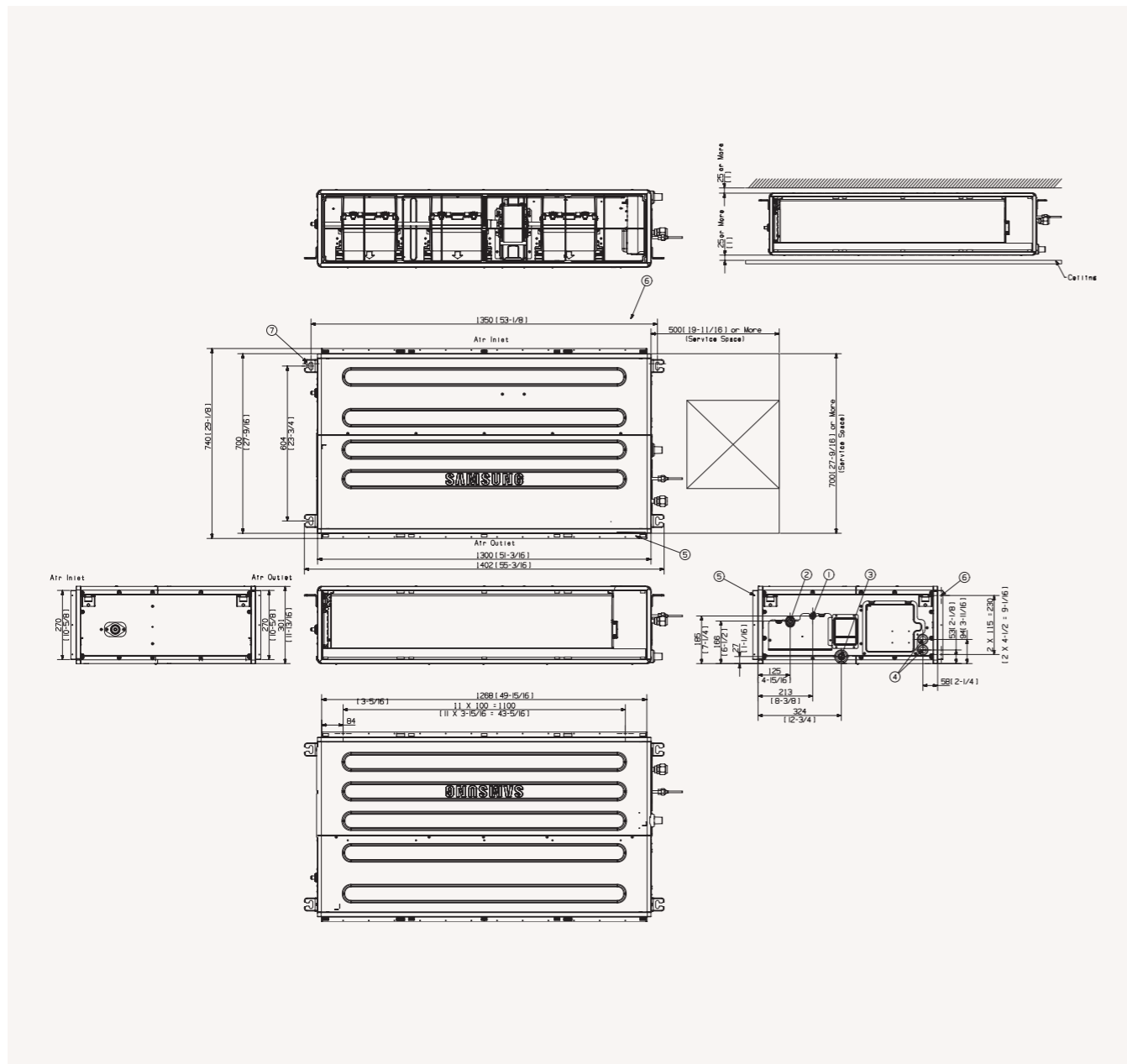


NO	Name	Description
1	Liquid piping	ø9.52 (3/8)
2	Gas piping	ø15.88 (5/8)
3	Condensation drain piping	VP25 (OD 32, ID 25)
4	Power supply/communication wiring conduits	
5	Air intake	
6	Air supply	
7	Air tie rods	Use M8-M10 bolt (4x)

Dimensional drawings

MSP Duct

AC035/052/060/071*NMDK*/EU



NO	Name	Description
1	Liquid piping	ø9.52 (3/8)
2	Gas piping	ø15.88 (5/8)
3	Condensation drain piping	VP25 (OD 32, ID 25)
4	Power supply/communication wiring conduits	
5	Air intake	
6	Air supply	
7	Air tie rods	Use M8-M10 bolt (4x)



Specifications

HSP Duct (R410A)

- Built-in electronic expansion valve (EEV) for refrigerant flow control (2000-step).
- Long-life washable HD 40 permanent filter is included.
- Auto Restart function.
- Condensation drain pump (optional)



Indoor Unit		AC200KNHPKH/EU	AC250KNHPKH/EU
Outdoor Unit - Mono-Phase		AC200KXAPNH/EU	AC250KXAPNH/EU
Outdoor Unit - Tri-Phase		AC200KXAPNH/EU	AC250KXAPNH/EU
Capacity			
Cooling (Min/Nominal/Max)	kW	7.50/20.00/23.00	9.00/25.00/28.50
Heating @ +7 °C (Min/Nominal/Max)	kW	8.50/23.00/25.00	10.00/27.00/32.00
Heating @ -5 °C	kW	-	-
Heating @ -15 °C	kW	-	-
Performance			
Energy Efficiency Cooling	SEER	W/W	-
	Power Consumption	kWh/a	-
	Pdesignc	kW	-
	EER	W/W	3.10
Energy Efficiency Heating	SCOP	W/W	-
	Power Consumption	kWh/a	-
	Pdesignh (average)	kW	-
	COP ¹	W/W	3.45
Airflow Rate	Indoor Unit (H/M/L)	m ³ /min	72.00/62.00/48.00
Sound Power	Indoor Unit	dB(A)	70
	Outdoor Unit	dB(A)	75
Sound Pressure	Indoor Unit (H/M/L)	dB(A)	44/40/36
	Outdoor Unit (H/L)	dB(A)	60/58
Fan/Outdoor Unit	Type		Sirocco
	Power	W	630
	Number of Fans	-	2
External Static Pressure	Min/Std/Max	Pa	49.03/72.00/196.13
Operating Temperature Range	Cooling	°C	-15~50
	Heating	°C	-20.0~24.0
Electrical Data			
Power Source	Indoor Unit	Φ, #, V, Hz	1Φ, 2, 220~240 V, 50 Hz
	Outdoor Unit Mono-Phase	Φ, #, V, Hz	1Φ, 2, 220~240 V, 50 Hz
	Outdoor Unit Tri-Phase	Φ, #, V, Hz	3Φ, 4, 380~415 V, 50 Hz
Compressor Type	Outdoor Unit	Type	BLDC Scroll
	Power (Min/Nominal/Max)	kW	2.10/6.45/8.00
Current Input	Cooling (Min/Std/Max)	A	
	Heating (Min/Std/Max)	A	
	Cooling - Tri-Phase (Min/Std/Max)	A	3.8/10.0/12.3
	Heating - Tri-Phase (Min/Std/Max)	A	3.8/10.3/16.0
Dimensions			
Net Dimensions (W x H x D)	Indoor Unit	mm	1,350 x 450 x 910
	Outdoor Unit	mm	940 x 1,630 x 460
Net Weight	Indoor Unit	kg	1,350 x 450 x 910
	Outdoor Unit	kg	154.0



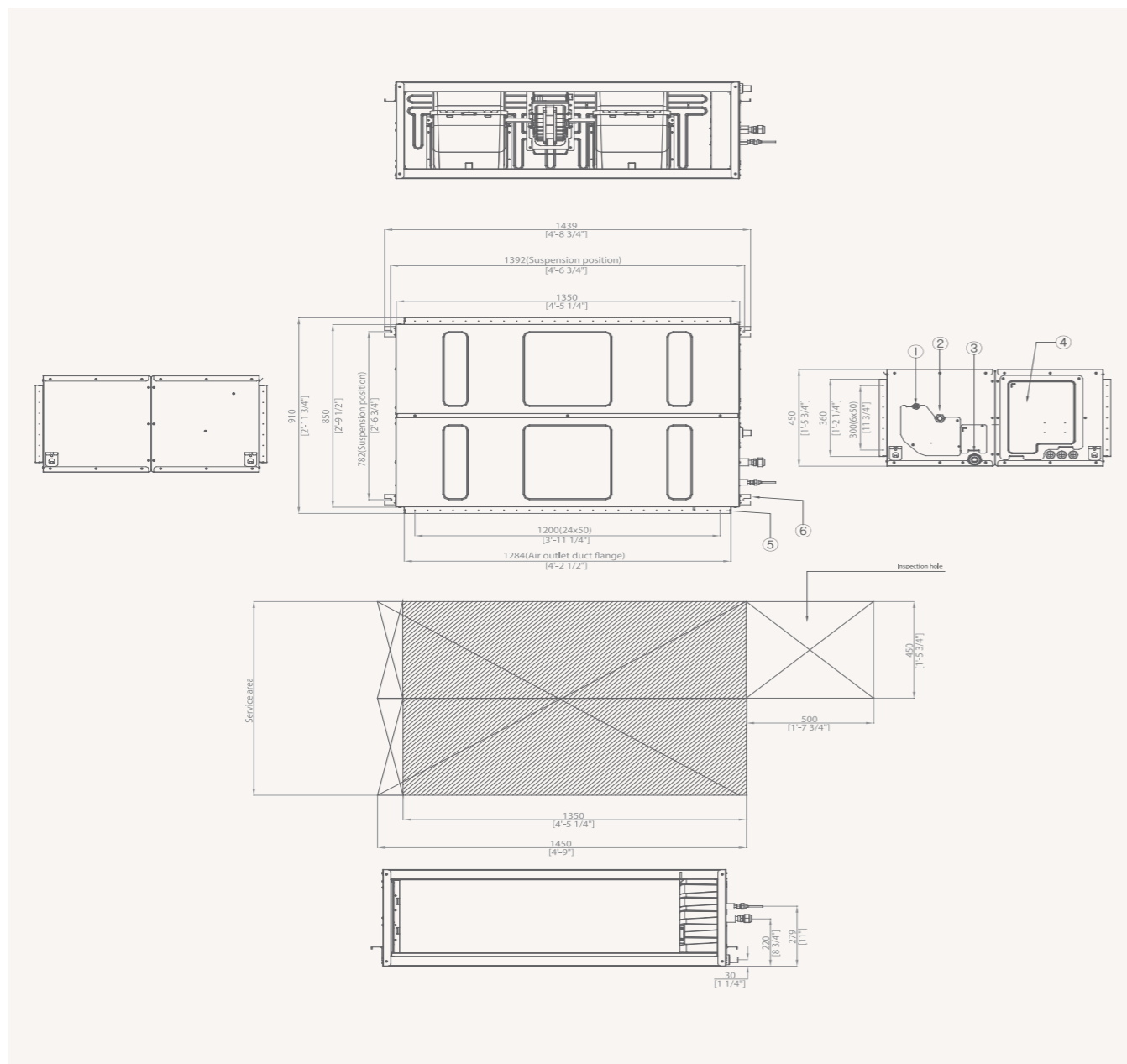
Indoor Unit		AC200KNHPKH/EU	AC250KNHPKH/EU
Outdoor Unit - Mono-Phase		AC200KXAPNH/EU	AC250KXAPNH/EU
Outdoor Unit - Tri-Phase		AC200KXAPNH/EU	AC250KXAPNH/EU
Refrigerant			
Refrigerant	Type		
	Factory Charging	kg	6.60
	Charging Ton equivalent CO ₂	tCO ₂ e	13.78
	Additional Refrigerant Charging	g/m	-
Piping Connections	Liquid Pipe	ø, inch	3/8
	Gas Pipe	ø, inch	3/4
Piping Length	Min/Max	m	75
Piping Height	Max	m	30
Piping Connections	Drain Pipe	ø, mm	VP25 (OD 32, ID 25)
Others			
Panel	Model Code		
	Net Dimensions (W x H x D)	mm	
	Net Weight	kg	
Accessories	Drain Pump		DC
	Max. Lifting Height/Displacement	mm / litres/h	

Accessories							
Drain Pump (optional)	Drain Pump (optional)	Wireless Remote Controller	Touch Controller	Advanced Wired Controller	Wi-Fi Kit	Wireless Receiver Kit	External Thermostat
MDP-G075SP	MDP-G075SQ	AR-EH03E (to be matched with MRK-A10N)	MWR-SH11N	MWR-WG00JN/ MWR-WG00KN	MIM-H04EN	MRK-A10N (to be matched with AR-EH03E)	MRW-TA

Dimensional drawings

HSP Duct

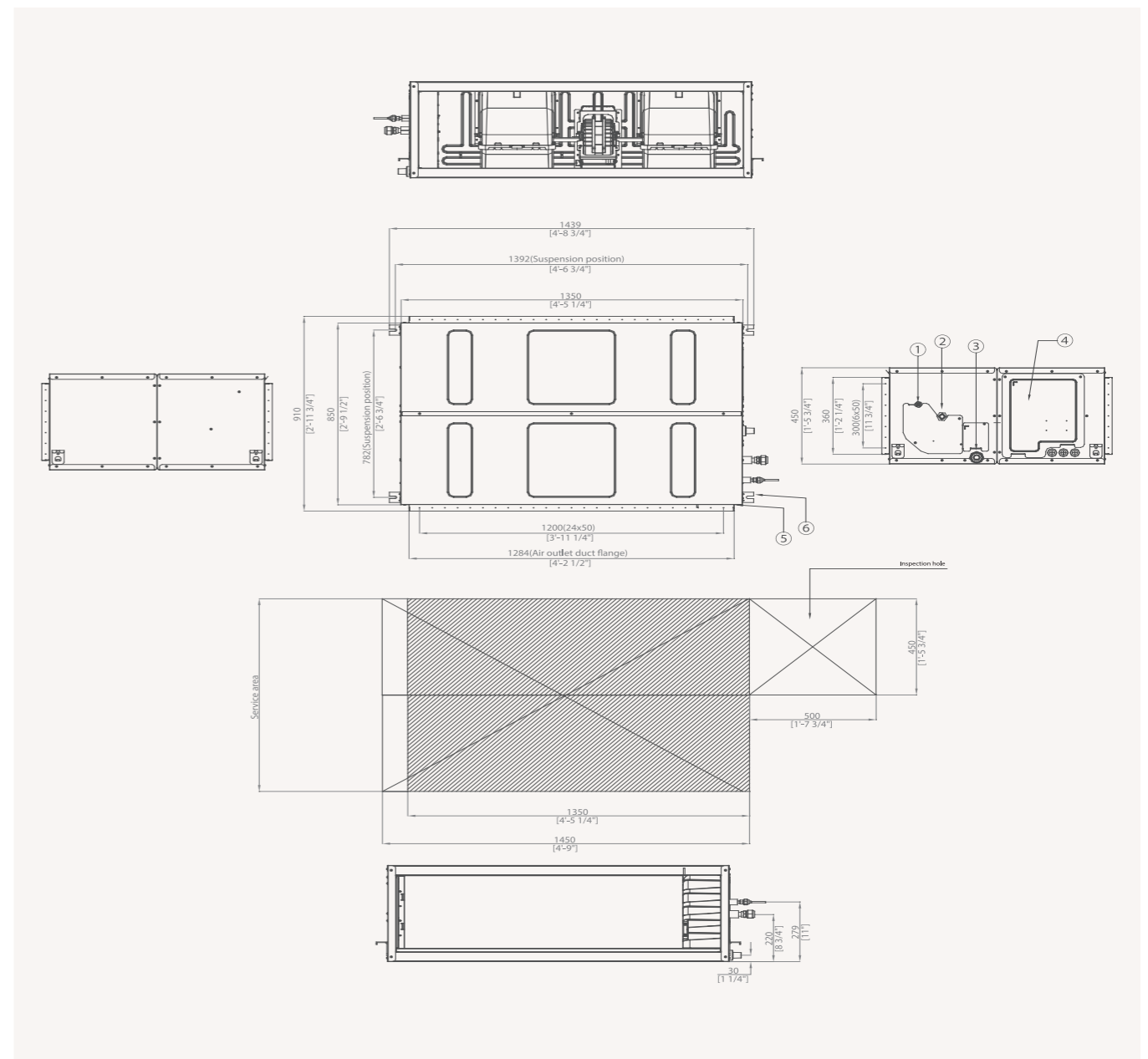
AC180JNHPKH/EU



NO	Name	Description
1	Liquid piping	ø9.52 (3/8)
2	Gas piping	ø19.05 (3/4)
3	Condensation drain piping	VP25 (OD 32, ID 25)
4	Power supply/communication wiring conduits	
5	Air supply	
6	Air tie rods	Use M8-M10 bolt (4x)

HSP Duct (Big Duct)

AC200/250KNHPKH/EU



NO	Name	Description	
		AC200KNHPKH/EU	AC250KNHPKH/EU
1	Liquid piping	ø9.52 (3/8)	ø9.52 (3/8)
2	Gas piping	ø19.05 (3/4)	ø22.22 (7/8)
3	Condensation drain piping		VP25 (OD 32, ID 25)
4	Power supply/communication wiring conduits		
5	Air supply		
6	Air tie rods		