

Specifications

Console R32

- SPI Ioniser (included).
- Slim design: only 100 mm in width.
- Built-in electronic expansion valve (EEV) for refrigerant flow control (2000-step).

- Two separate air outlets, upper (cooling) and bottom (heating) to avoid stratification.
- Long-life washable permanent filter.
- Auto Restart function.



Indoor Unit		AC026RNJDKG/EU	AC035RNJDKG/EU	AC052RNJDKG/EU	
Outdoor Unit - Mono-Phase		AC026RXADKG/EU	AC035RXADKG/EU	AC525RXADKG/EU	
Outdoor Unit - Tri-Phase					
Capacity					
Cooling (Min/Nominal/Max)	kW	1.0/2.6/3.4	1.0/2.6/3.4	1.9/5.0/5.5	
Heating @ +7 °C (Min/Nominal/Max)	kW	1.0/3.5/4.2	1.1/4.0/4.6	1.5/5.6/6.5	
Heating @ -5 °C	kW	3.4	3.9	5.5	
Heating @ -15 °C	kW	3.00	3.50	4.90	
Performance					
Energy Efficiency Cooling	SEER ¹	W/W	6.4/ A++	6.1/ A++	5.9/ A+
	Power Consumption	kWh/a	142	201	297
	Pdesignc	kW	2.6	3.5	5.0
	EER	W/W	3.61	3.12	2.79
Energy Efficiency Heating	SCOP ¹	W/W	4.2/ A+	4.1/ A+	4.0/ A+
	Power Consumption	kWh/a	667	683	840
	Pdesignh (average)	kW	2.0	2.0	2.4
	COP ¹	W/W	3.30	3.07	3.01
Airflow Rate	Indoor Unit (H/M/L)	m ³ /min	7.5/6.8/6.0	8.5/7.2/6.2	9.4/8.4/7.4
Sound Power	Indoor Unit	dB(A)	53	55	60
	Outdoor Unit	dB(A)	59	61	62
Sound Pressure	Indoor Unit (H/M/L/Silent)	dB(A)	36/31/26/23	38/34/30/24	43/39/35/32
	Outdoor Unit (H/L)	dB(A)	47/46	48/48	48/48
Fan/Outdoor Unit	Type		Turbo	Turbo	Turbo
	Power	W	37	35	35
	Number of Fans	-	1	1	1
External Static Pressure	Min/Std/Max	Pa			
Operating Temperature Range	Cooling	°C	-15-46	-15-46	-15-50
	Heating	°C	-20.0-24.0	-20.0-24.0	-20.0-24.0
Electrical Data					
Power Source	Indoor Unit	Φ, #, V, Hz	1Φ, 2, 220-240 V, 50 Hz	1Φ, 2, 220-240 V, 50 Hz	1Φ, 2, 220-240 V, 50 Hz
	Outdoor Unit Mono-Phase	Φ, #, V, Hz	1Φ, 2, 220-240 V, 50 Hz	1Φ, 2, 220-240 V, 50 Hz	1Φ, 2, 220-240 V, 50 Hz
	Outdoor Unit Tri-Phase	Φ, #, V, Hz			
Compressor Type	Outdoor Unit	Type	Single BLDC	Single BLDC	Twin BLDC
	Power (Min/Nominal/Max)	Cooling	kW	0.23/0.72/1.20	0.25/1.12/1.50
Heating		kW	0.21/1.06/1.45	0.21/1.30/1.80	0.25/1.86/2.50
Current Input	Cooling (Min/Std/Max)	A	1.6/3.6/5.5	1.6/5.5/7.5	2.6/8.0/10.0
		A	1.3/5.0/7.0	1.3/5.9/10.5	2.3/8.3/14.0
	Heating (Min/Std/Max)	A			
		A			
Dimensions					
Net Dimensions (W x H x D)	Indoor Unit	mm	720 x 199 x 620	720 x 199 x 620	720 x 199 x 620
	Outdoor Unit	mm	790 x 548 x 285	790 x 548 x 285	880 x 638 x 310
Net Weight	Indoor Unit	kg	16.0	16.0	16.0
	Outdoor Unit	kg	32.5	35.5	46.5
Refrigerant					
Refrigerant	Type		R32 (contains fluorinated greenhouse gases. GWP = 675)		
	Factory Charging	kg	0.9/2.0 m	0.9/2.0 m	1.2/1.0 m
	Charging Ton equivalent CO ₂	tCO ₂ e	0.61	0.61	0.81
	Additional Refrigerant Charging	g/m	-	-	15
Piping Connections	Liquid Pipe	ø, inch	1/4	1/4	1/4
	Gas Pipe	ø, inch	3/8	3/8	1/2
Piping Length	Min/Max	m	3/20	3/20	3/30
	Piping Height	Max	m	15	20
Piping Connections	Drain Pipe	ø, mm	ID 18	ID 18	ID 18

Accessories



Touch Controller

MWR-SH11N



Advanced Wired Controller

MWR-WG00JN/MWR-WG00KN



Wi-Fi Kit

MIM-H04EN



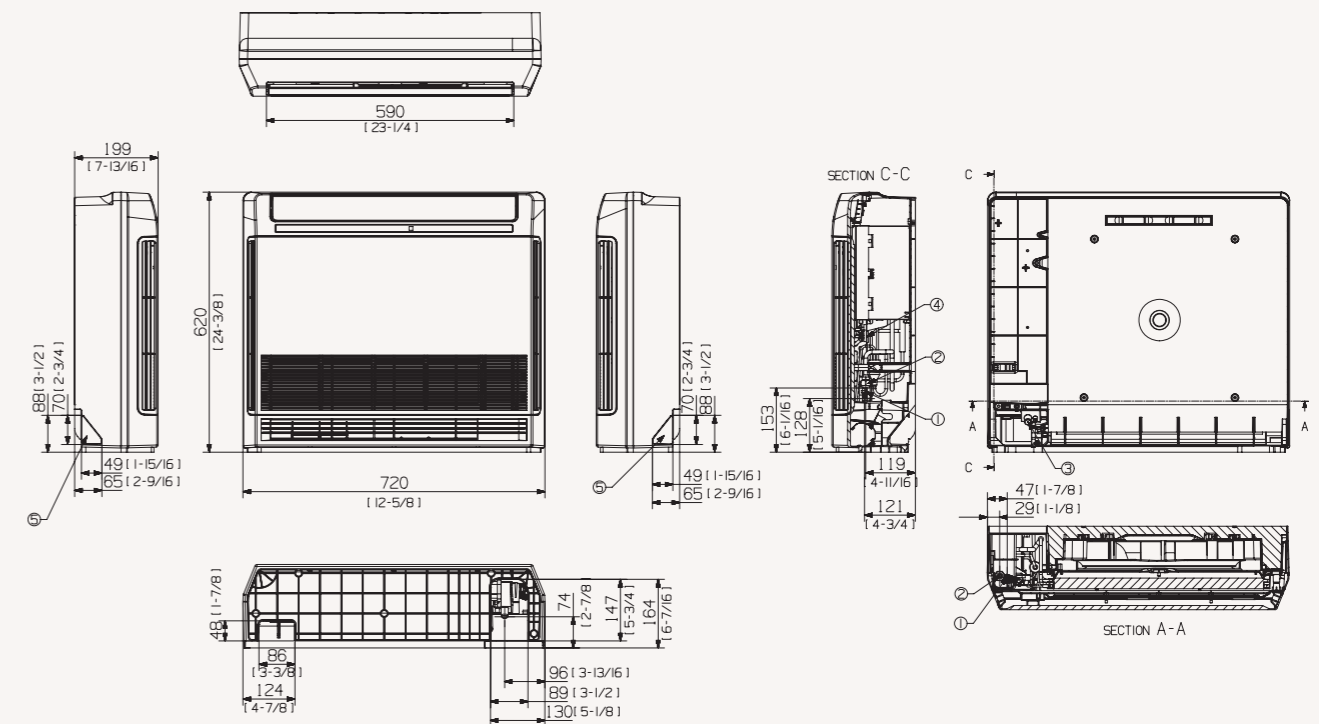
External Thermostat

MRW-TA

Dimensional drawings

Console

AC026/035/052*NJDK*/EU



NO	Name	Description	
		AC026*NJDK*/EU	AC035*NJDK*/EU AC052*NJDK*/EU
1	Liquid piping	ø6.35 (1/4)	
2	Gas piping	ø9.52 (3/8)	ø12.70 (1/2)
3	Condensation drain piping	ID 18 [11/16] Hose	
4	Power supply/communication wiring conduits		
5	Condensation drain piping		

Specifications

Ceiling R32

- Vertical or horizontal installation.
- Air supply by means of one adjustable blade; blade angle between 4° and 45°.
- Reduced noise thanks to the remotely controlled EEV.
- Long-life washable HD 40 permanent filter is included.



Indoor Unit		AC052RNC DKG/EU	AC071RNC DKG/EU
Outdoor Unit - Mono-Phase		AC052RXADKG/EU	AC071RXADKG/EU
Outdoor Unit - Tri-Phase			
Capacity			
Cooling (Min/Nominal/Max)	kW	1.20/5.00/6.50	1.50/7.10/8.70
Heating up to +7 °C (Min/Nominal/Max)	kW	1.70/6.00/7.70	1.90/8.00/9.00
Heating @ -5 °C	kW	5.9	7.8
Heating @ -15 °C	kW	5.20	7.00
Performance			
Energy Efficiency Cooling	SEER ¹	W/W 6.1/ A++	5.6/ A+
	Power Consumption	kWh/a 273	444
	Pdesignc	kW 5.0	7.1
	EER	W/W 3.05	2.42
Energy Efficiency Heating	SCOP ¹	W/W 3.9/A	3.9/A
	Power Consumption	kWh/a 862	1,256
	Pdesignh (average)	kW 2.4	3.5
	COP ¹	W/W 3.37	2.74
Airflow Rate	Indoor Unit (H/M/L)	m ³ /min 12.6/11.3/10.0	15.2/14.1/13.1
Sound Power	Indoor Unit	dB(A) 60	64
	Outdoor Unit	dB(A) 62	65
Sound Pressure	Indoor Unit (H/M/L)	dB(A) 41/39/36	46/44/42
	Outdoor Unit (H/L)	dB(A) 48/48	51/49
Fan/Outdoor Unit	Type	Sirocco	Sirocco
	Power	W 40	40
	Number of Fans	- 2	2
External Static Pressure	Min/Std/Max	Pa	
Operating Temperature Range	Cooling	°C -15-50	-15-50
	Heating	°C -20.0-24.0	-20.0-24.0
Electrical Data			
Power Source	Indoor Unit	Φ, #, V, Hz 1Φ, 2, 220-240 V, 50 Hz	1Φ, 2, 220-240 V, 50 Hz
	Outdoor Unit Mono-Phase	Φ, #, V, Hz 1Φ, 2, 220-240 V, 50 Hz	1Φ, 2, 220-240 V, 50 Hz
	Outdoor Unit Tri-Phase	Φ, #, V, Hz	
Compressor Type	Outdoor Unit	Type Twin BLDC	Twin BLDC
	Power (Min/Nominal/Max)	Cooling kW 0.48/1.58/1.90	0.35/2.87/3.60
Current Input	Heating kW 0.43/1.92/3.05	0.35/3.05/3.95	
	Cooling (Min/Std/Max)	A 2.8/7.2/9.0	2.0/12.4/16.0
	Heating (Min/Std/Max)	A 2.4/8.5/14.5	2.0/13.2/17.0
Cooling - Tri-Phase (Min/Std/Max)	A		
	Heating - Tri-Phase (Min/Std/Max)	A	
Dimensions			
Net Dimensions (W x H x D)	Indoor Unit	mm 1,000 x 200 x 650	1,000 x 200 x 650
	Outdoor Unit	mm 880 x 638 x 310	880 x 798 x 310
Net Weight	Indoor Unit	kg 20.0	20.0
	Outdoor Unit	kg 43.0	51.0
Refrigerant			
Refrigerant	Type	R32 (contains fluorinated greenhouse gases. GWP = 675)	
	Factory Charging	kg 1.2/10 m	1.7/15 m
	Charging Ton Equivalent CO ₂	tCO ₂ e 0.81	1.15
	Additional Refrigerant Charging	g/m 15	25
Piping Connections	Liquid Pipe	ø, inch 1/4	1/4
	Gas Pipe	ø, inch 1/2	5/8
Piping Length	Min/Max	m 3/30	3/50
Piping Height	Max	m 20	30
Piping Connections	Drain Pipe	ø, mm ID 18	ID 18

Accessories



Touch Controller

MWR-SH11N



Advanced Wired Controller

MWR-WG00JN/MWR-WG00KN



Wi-Fi Kit

MIM-H04EN



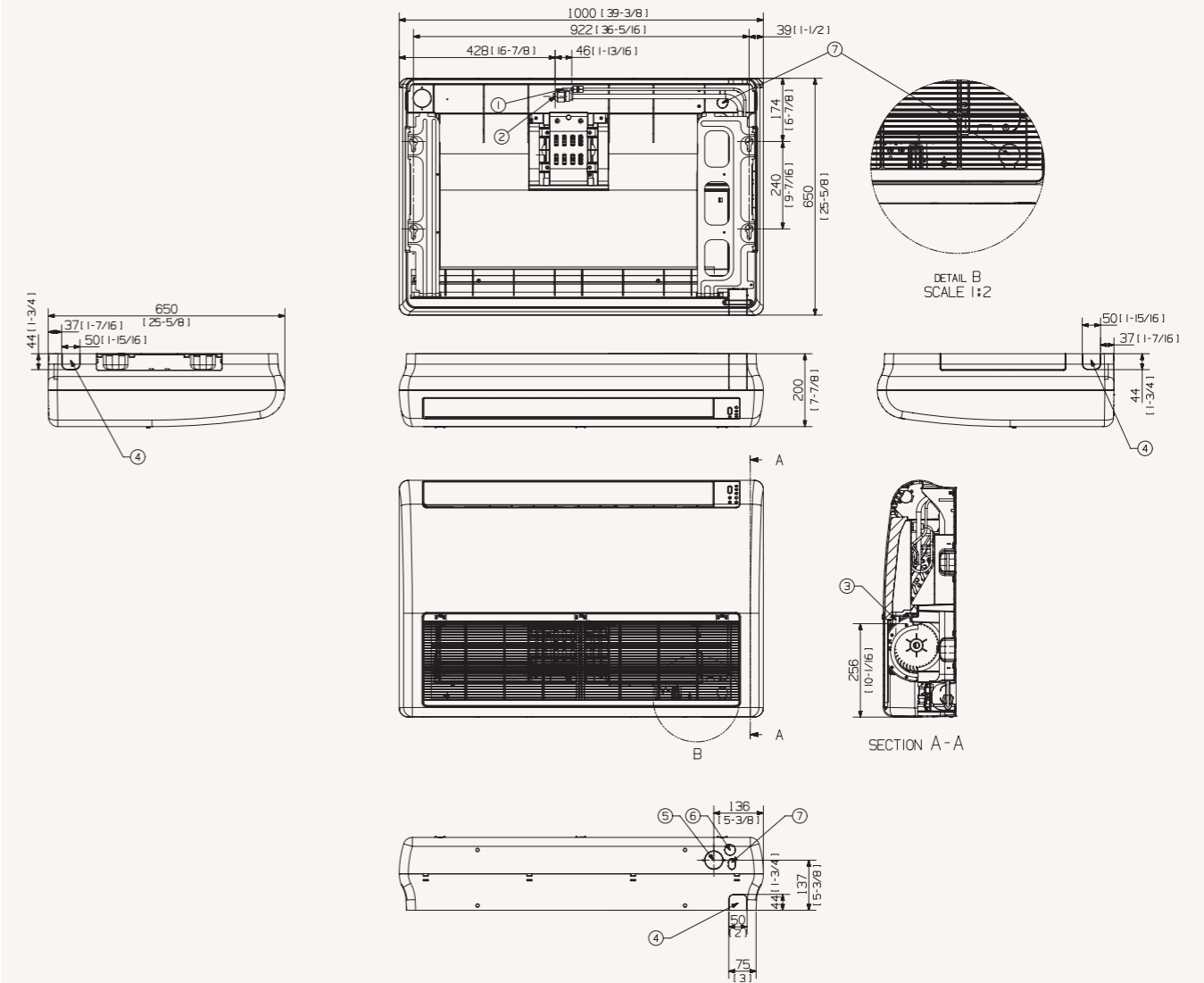
External Thermostat

MRW-TA

Dimensional drawings

Ceiling

AC052/071*NC DK*/EU



NO	Name	Description	
		AC052MNC DKH/EU	AC071MNC DKH/EU
1	Liquid piping	ø6.35 (1/4)	
2	Gas piping	ø12.70 (1/2)	ø15.88 (5/8)
3	Condensation drain piping		ID 18 [11/16] Hose
4	Piping connection		
5	Connection for external air		ø50 [2]
6	Connection of the condensation drain pipe		
7	Connection of the communication cables		